

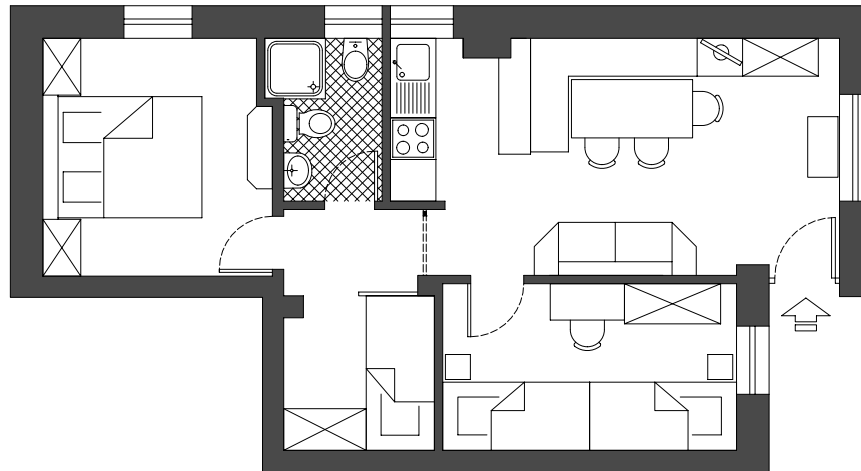
APPARTAMENTO / APARTMENT: **BUCANEVE**

POSTI LETTO / BEDS: **5**



PIANO TERRA / GROUND FLOOR

SUPERFICIE COMMERCIALE / COMMERCIAL AREA: 60 mq

SUPERFICIE CALPESTABILE / FLOOR AREA: 47 mq



SERVIZI / SERVICES:

-  LAVATRICE CONDOMINIALE / COLLECTIVE WASHING MACHINE
-  LAVASTOVIGLIE / DISHWASHER
-  STIRERIA / IRONING ROOM
-  FORNO MICROONDE / MICROWAVE
-  TV / TV
-  CASSAFORTE / SAFE
-  RISCALDAMENTO A TERMOSIFONI / RADIATORS
-  CAMINETTO / BARBECUE
-  WIFI GRATUITO / FREE WIFI
-  DEPOSITO SCI - BICICLETTE / SKI - BIKE DEPOT
-  GIARDINO PRIVATO / PRIVATE GARDEN
-  GIOCHI / PLAYGROUND
-  PARCHEGGIO PRIVATO / PRIVATE PARKING
-  SI ACCETTANO ANIMALI / PETS ALLOWED
-  BIANCHERIA LETTO - BAGNO / BED - BATH LINEN
-  150m DALLE PISTE DA SCI / 150m FROM SKI SLOPES
-  VICINO FERMATA AUTOBUS / NEAR BUS STOP